

Landscape Design Portfolio

Eva Montane

Eva Montane

I have earned a certification in Landscape Design and feel fortunate to have found a career that is the perfect culmination of my passions: nature, beauty, and creativity. I love working with plants and people to facilitate happier, healthier encounters for both.

Maintaining gardens since 2000 has provided me a solid base understanding of how plants perform together in a domestic setting. Five years working as a field botanist afforded me the opportunity to witness how native plants find the habitats and arrangements that best suit them, how the lay of the land affects plant growth, and ultimately how we might use nature as a model in creating more successful domestic landscapes.

A Permaculture Design Certificate is another qualification I have earned that aids my ability to find the solutions in my clients' landscape challenges. Additionally I am lucky to have a quality local master gardener program from which I graduated and went on to help teach.

I started my training and experience with ornamental horticulture in northern California, and have continued it in southwest Colorado where I have lived since 2005. The two distinct climates give me great adaptability and knowledge of very different plant palettes.

My preference is always to work WITH nature for the most successful results. I firmly believe in low maintenance landscapes that are beautiful and showcase a distinct aesthetic that only native and adapted plants can offer. I believe that skillfully visioned hardscape - walkways, patios, pergolas, firepits, etc. - add structure that is crucial to an enjoyable outdoor space physically, and visually throughout the year.

Upon the purchase of Columbine Landscapes in 2015 I was able to fluently merge my vision in the creation of the design phase with a skilled crew to diligently maintain the integrity of the design over time.



Table of Contents

1 - About Eva

4 - 6 Education, Experience, Achievements

9 - 18 Residential Designs, Before and After

20 - 25 Commercial Designs, Before and After

26 - 28 Design Concepts

30 - 35 The Design Process

Academic Achievements

Bachelor's Degree in Botany - Miami University

*Fundamentals of Garden Design Certification -
California School of Garden Design*

*Permaculture Design Certification -
Punta Mona Permaculture Center*

*Colorado Master Gardener Certification -
Colorado State University*

*Water Harvesting Design Certification -
Watershed Management Group*

Noteworthy Experience

3 seasons working on organic veggie farms

5 seasons working as a field botanist

*Guide for Crested Butte's Annual weeklong Wildflower festival
2007 - 2015 and 2018 to current*

*3 years as Vice President of Southwest chapter of Colorado
Native Plant Society*

*Co-designed Durango Public Library's Plant Select demonstration
garden and served on the board of Durango Botanical Society*

*Wrote Colorado Country Life's monthly garden column 2009 -
2014*

*Presented Winter Interest in the Landscape at Idaho Botanical
Garden's Rethinking Idaho's Landscapes symposium in Boise 2018*

*Presented on Fire-wise Landscaping For Durango Botanical
Society 2018*

Businesses

Gardens by Eve, LLC - Maintenance and Design company in Durango 2007 - 2012

AbundantEarthGardens.com - Website designed to educate western gardeners through audio and photo presentations from celebrated regional gardeners 2012 - Present

Columbine Landscapes Co - Design, Installation and Maintenance Company in Durango 2015 - present



“

“Biophilia is the humankind’s innate biological connection with nature. It helps explain why crackling fires and crashing waves captivate us; why a garden view can enhance our creativity; why shadows and heights instill fascination and fear; and why animal companionship and strolling through a park have restorative, healing effects. [Connection with nature] can reduce stress, improve cognitive function and creativity, improve our well-being and expedite healing”

- Terrapin Bright Green, LLC



We value the Earth.

In everything we do, we keep our impact on the Earth in mind and endeavor to minimize our environmental footprint. We reduce, reuse, and recycle, which includes composting our green waste. We proudly display a bee in our logo to indicate that we are pollinator friendly, which means we carefully select non-toxic products to use in our work.

The landscapes we design incorporate native and adapted plants that require minimal inputs to thrive and uphold our aesthetic standards. Our design approach relies on rainwater catchment to maximize the resources available to us for free, for the benefit of the Earth, and our clients' finances. How our actions affect the planet, and the integrity of our designs over time are central to our planning.

Residential

Our home landscape is the access point through which many of us most frequently experience nature. Our services keep it FRESH, LIVELY, and BEAUTIFUL, and help draw you outside where you'll feel good being in your outdoor space. We thereby increase your interaction with the nature that surrounds you and supports you on many levels.





A firewise landscape design, using gravel mulch. The plants will grow to fill in empty space and offer privacy and a pleasing landscape to look at from the street and indoors.



Client wanted a landscape design that required low water usage to look beautiful. Careful selection of low water usage plants, correct placement, and proper mulching made this possible!







Client's goal was to reduce water use by removing a thirsty lawn for a more interesting and diverse water-wise landscape.







First place winner for Durango's 2018 Parade of Homes in Outdoor Living Space category.



We value our team.

We endeavor that our team members grow personally as well as professionally during their time with us. Enhancing their gardening skills and knowledge of land stewardship beyond their daily tasks is encouraged through Continuing Education opportunities. On the job they also learn deeply the value of mutual respect.

They work with their fellow crew members and managers as a team by honing communication skills, learning to look ahead to the next task and acting proactively, and working in a collaborative environment. They are guided to take a look at themselves and how they would like to grow personally and professionally, and are given the tools to do so.

When it comes time to part ways, they have gotten to know themselves on a deeper level, learned how to be more authentic, and gained skills beyond the realm of the garden, which will serve them for the rest of their careers and lives.

Commercial

Commercial landscapes present unique challenges that must be addressed for a successful landscape. Always being on show, it must look tip top at all times. Any signs must be clearly visible at all times. Pathways and entrances need to be attractive and easy to locate and navigate.





DURANGO
BREWING CO.

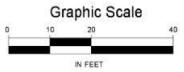




**Aztec, New Mexico
Microtel Amenities**

1. Heated Pool
2. Deck Surface Heated
3. Swim Jacuzzi
4. Patio at Poolside
5. Bathroom & Shower
6. Jogging/Walking Trail
7. Fenced Dog Run
8. BBQ w/Fridge, Bar
Seating, Sound System
9. Fire Pit w/Seating
10. Amphitheater Seating up
to 35/45
11. Water Fountain w/Seating
12. 2,500 sq ft patio
(breakfast)
13. Gazebo

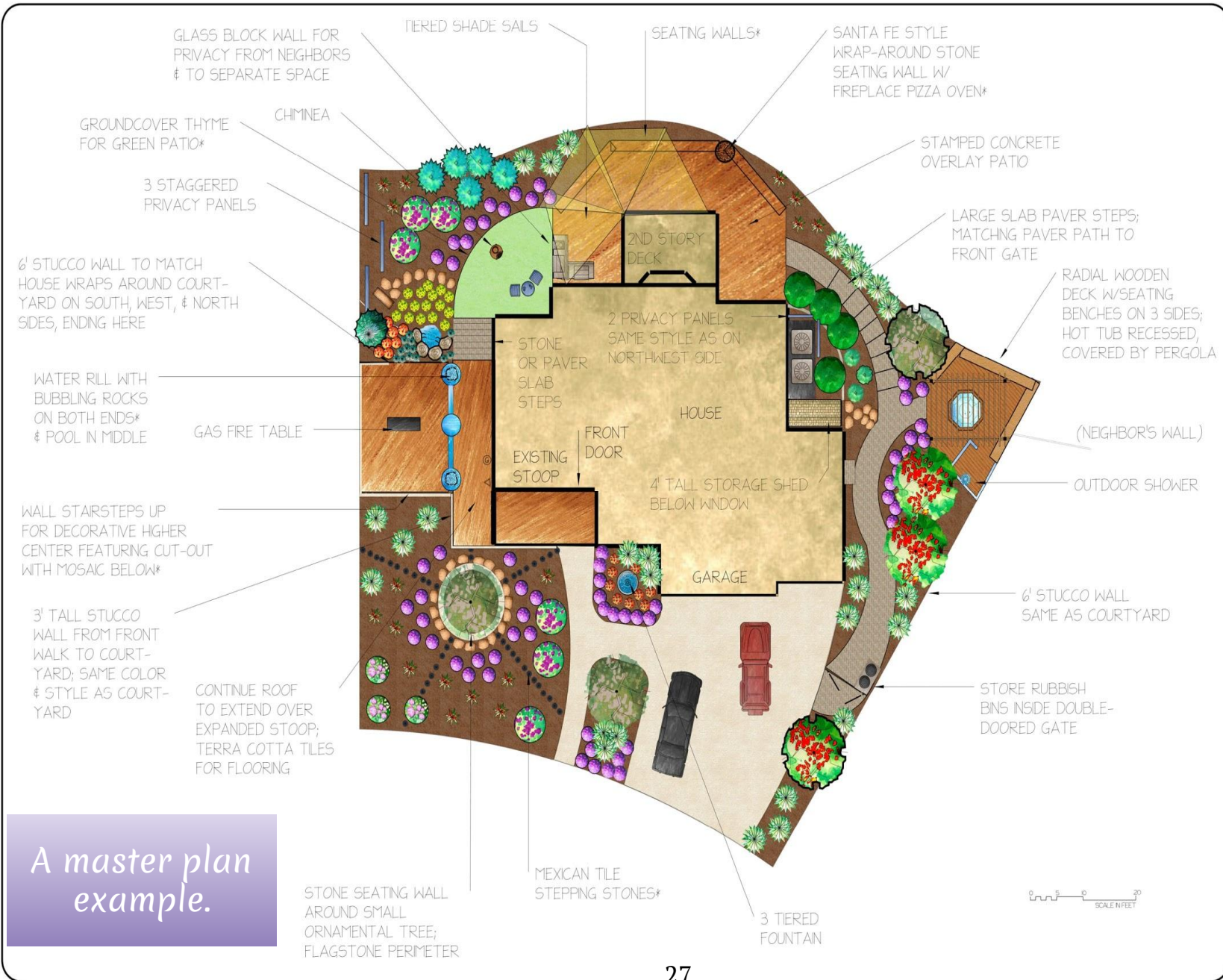
Conceptual Design by
Abundant Earth Gardens 2019





Design Concepts

*Every design needs to start with both
function and aesthetics in mind*



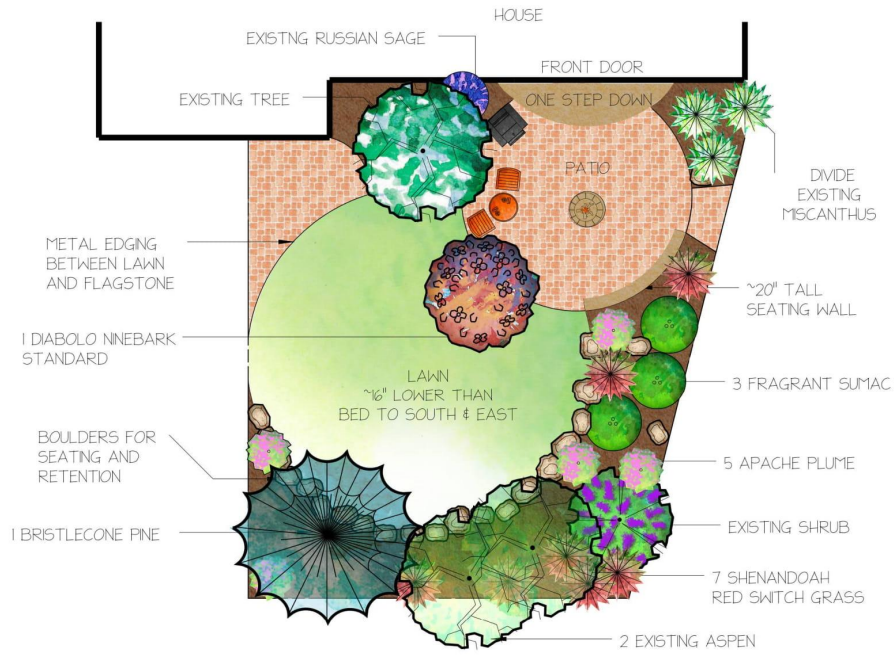
A master plan example.

EVA MONTANE
 AbundantEarthGardens.com
 eva@AbundantEarthGardens.com
 (970) 769-3399

JACOBS RESIDENCE
 4121 VISTA PINON DR
 SCALE 1:1/8 DATE NOV 2014 DRAWING # MASTER PLAN



Qty	Botanical Name	Common Name
Trees		
1	<i>Pinus aristata</i>	BRISTLECONE PINE
Shrubs		
5	<i>Fallugia paradoxa</i>	APACHE PLUME
1	<i>Physocarpus opulifolius 'Monte'</i>	DIABOLO NNEBARK
3	<i>Rhus aromatica</i>	FRAGRANT SUMAC
Ornamental Grasses		
7	<i>Panicum virgatum 'Shenandoah'</i>	SHENANDOAH RED SWITCH GRASS



GILLASPY FRONT YARD 239 JENKINS RANCH		
date:	date:	revision:
scale: 1:10	JUNE 2014	
drawn by: EVA MONTANE	checked by:	drawing #: 1

EVA MONTANE
 ABUNDANT EARTH GARDENS
 (970) 769-3319
 eva@AbundantEarthGardens.com



We value our clients.

We are here to serve our clients and tailor our service to meet their needs and provide high value. We embrace an attitude of gratitude with our clients. We are grateful they chose us to partner with them to steward their land. Our ability to exceed their expectations increases dramatically when they give us feedback and input on their functional and aesthetic goals.

The fact that we nurture our team makes them want to return year after year and creates an experienced staff that delivers a quality service to our clients. Our team is happy in their roles and passionate about the work they do and this shows and benefits our clients in terms of value for their dollar.

Start to Finish

The before, during, and after of a job



Before photo of the entire area to be designed.

Bauer Residence

Design by Eva Montane
Columbine Landscapes Co

2018

Plant List

- 5 Apache plume
- 5 Blue Chip junipers
- 5 Wichita junipers
- 5 Red Leaf rose
- 7 Adam's needle yucca
- 3 Gro Low sumac
- 5 Mormon tea
- 3 Fern bush
- 1 Patmore Purple Ash
- 1 Silver buffalo berry
- 1 Desert Olive
- 1-3 Scarlet Trumpet honeysuckle

design
concept

Passive rain water harvesting basins pass the test! Planting can now be done.





Finished (but not done growing!) product. Low water usage, native grass was planted in soil around the gravel feature. Plants will grow up to fill in space, to be a smart, water-wise, firewise and pleasing landscape!

Our design services are flexible and cater to our client's needs from on site consulting, to a simple design from a photo of their existing space, to a detailed color CAD to scale